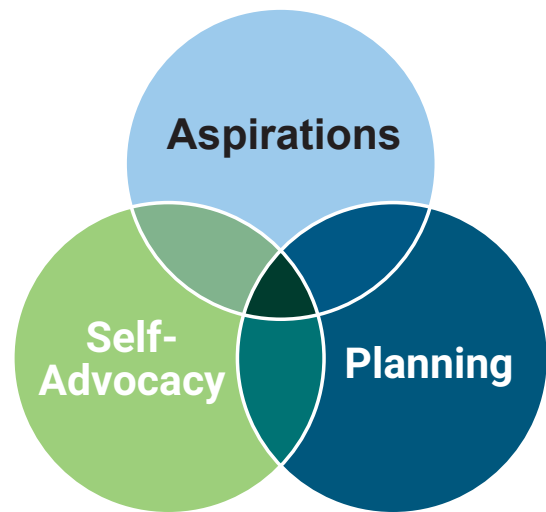
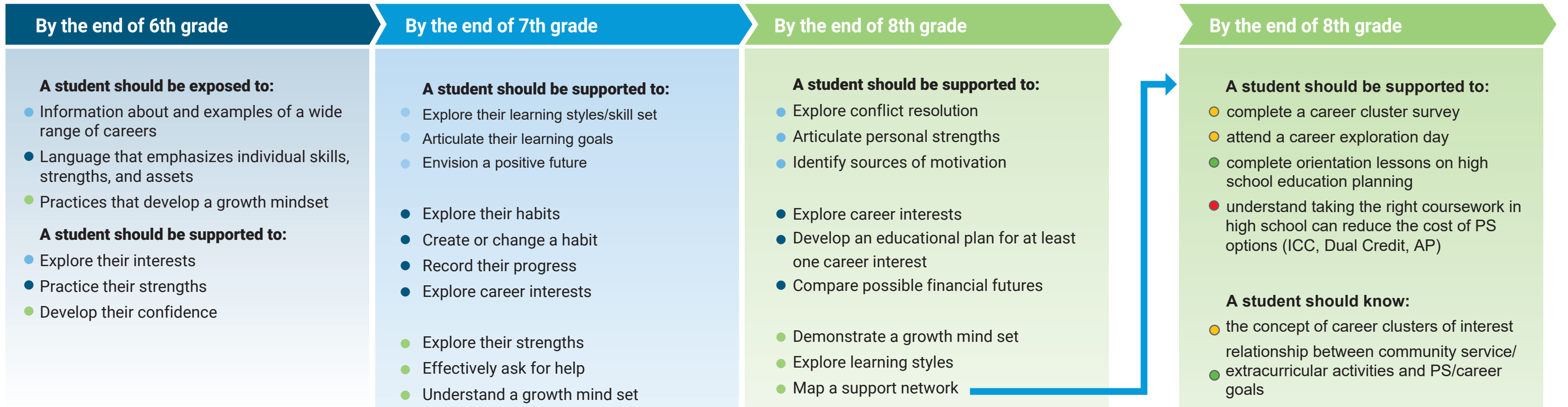


Princeville Jr. High School PaCE Postsecondary and Career Expectations

At the middle school level, the (PaCE) Framework is designed to provide students with guided exploration of postsecondary planning and options in a manner that is consistent with the developmental stage of each student. This developmental work is intended to prepare students to more fully engage with the PaCE Framework throughout the high school years.



Postsecondary and Career Expectations

Each student should have an individualized learning plan to help make decisions about career and postsecondary (PS) education or training, to plan a course of study, and to make financial aid assessments with family members.

By the end of 9th grade	By the end of 10th grade	By the end of 11th grade	By the end of 12th grade
<p>A student should be supported to:</p> <ul style="list-style-type: none"> complete a career cluster survey complete a career interest survey attend a PS options workshop discuss course work for PS/ career plans aligned with the ISBE College and Career Readiness Indicators (CCRIs) begin determining eligibility for ICC, advanced placement (AP) courses outline a plan for community service and extracurricular activities related to PS plans be exposed to a financial literacy unit in a course/workshop and complete a basic financial aid assessment with a family member <p>A student should know:</p> <ul style="list-style-type: none"> one or two careers for further exploration the relationship between HS coursework, attendance, and grades to PS plans importance of community service and extracurricular activities to PS and career plans general cost ranges of various PS options 	<p>A student should be supported to:</p> <ul style="list-style-type: none"> complete an orientation course to a particular career cluster or cluster grouping connect and build relationships with 2-3 adults to support the PS and career selection process review coursework, and PS/ career plans in relation to the ISBE CCRIs (every year) attend a basic financial aid presentation with a family member <p>A student should know:</p> <ul style="list-style-type: none"> educational requirements, cost, expected entry level, and midpoint salary for occupations in selected career pathway (CP) skills related to career interests (Xello) different types of PS credentials and institutions general timing of PS entrance exams and applications benefit of early college credit opportunities to PS access and completion 	<p>A student should be supported to:</p> <ul style="list-style-type: none"> revisit the career interest survey visit at least one workplace aligned with career interests create a resume and personal statement explore the process of obtaining an industry-based credential related to CP, if applicable determine readiness for college-level coursework in math/ELA and enrollment in either "catch up" or "speed up" course complete at least one early college credit opportunity attend a college fair visit at least one PS institution take at least one college entrance exam Complete a Postsecondary Plan Workshop <p>A student should know:</p> <ul style="list-style-type: none"> application deadlines, test timing, cost, and preparation for industry-based certification for CP entrance requirements, including application deadlines, for expected PS for programs of study 3-5 match schools, one safety, one reach school for PS program of study negative impact of remediation on PS goals financial aid deadlines for chosen PS options 	<p>A student should be supported to:</p> <ul style="list-style-type: none"> Address any remedial needs in math/ELA Visit at least one PS institution obtain an internship opportunity related to the CP and/or if applicable, receive industry-based certification(s) related to the CP participate in a mock job interview <p>A student should know:</p> <ul style="list-style-type: none"> how CP courses and experiences articulate to degree programs at PS options estimated cost of chosen PS options affordability of PS options in relation to expected entry-level career salary and anticipated debt terms and conditions of any scholarship or loan <p>By 12/31, a student should have:</p> <ul style="list-style-type: none"> completed 2 or more admissions applications to PS institutions met with school counselor to ensure all steps in the PS admissions process are completed on time attended a financial Aid application completion workshop completed a financial aid application

