



THE MONETARY AWARD PROGRAM

mapmatters



FOR OVER 58 YEARS, THE MONETARY AWARD PROGRAM (MAP) HAS HELPED MAKE COLLEGE POSSIBLE FOR MILLIONS OF ILLINOISANS ACROSS THE STATE

MAP recipients come from every legislative district and county in the state. MAP provides need-based aid that a student doesn't have to repay, defraying tuition and fee costs and limiting excessive student loan debt for those who don't have the resources to pay for college.

Historic funding levels. For more than 20 years, the level of MAP funding was unable to keep up with tuition and fee increases, and funding ran out quickly, leaving many eligible low income students without access to this critical grant. Unprecedented increases in the last five years have brought the program's funding to more than \$711 million in FY25.

Life-changing impact. In FY24, almost 145,000 students used a MAP award to attend college, with maximum awards over \$8,000. Bigger grant sizes have improved the purchasing power of MAP and increased the likelihood that a student will enroll, persist, and graduate with less debt. The Governor's proposed increase of \$10 million for FY26 will help us continue to make progress in supporting all Illinois students to achieve their postsecondary goals.



"For me, MAP = degree. The Monetary Award Program helped make college possible for me, especially after my only parent lost her job while I was in college. I thought I was going to have to drop out. I wouldn't be here without MAP."

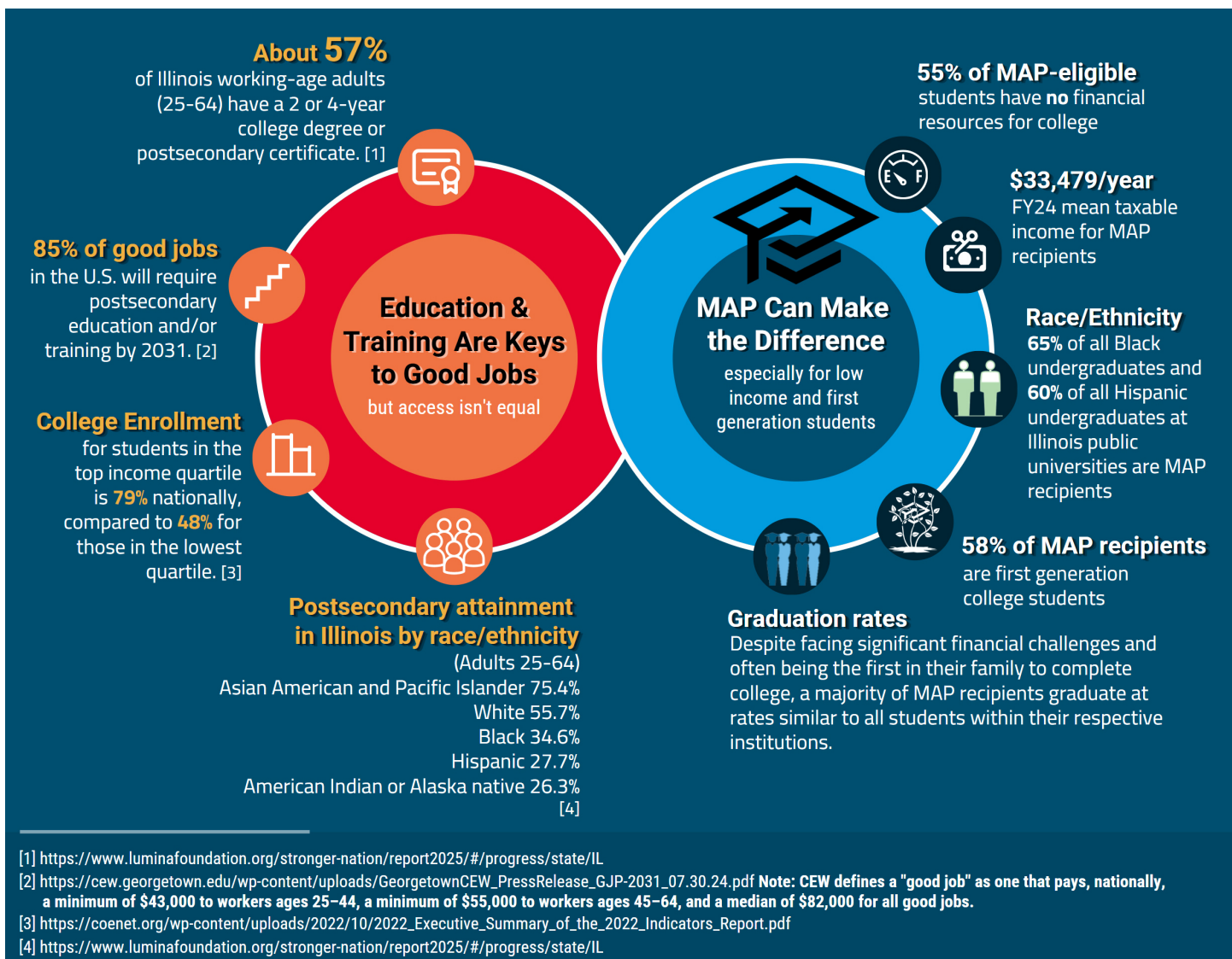
MELISSA HAHN

MAP Can Make the Difference



“As a self-supporting undergraduate student, the MAP grant helped to decrease my tuition payments and relieve much of my financial burden. The grant helped make it possible for me to attend and graduate from college and helped inspire me to pursue a career helping other students find success through postsecondary education.”

SERENA NICOLE ROBERTSON



“MAP made it possible for me to attend college. I was the only Latina in the honors program in college. I didn't see people like me crossing the stage in college or graduate school, and that hit home. I am very grateful for the MAP grant because without it I wouldn't have been able to afford college, attain my degree, and pursue the career I wanted.”

JASMINE JETTON-GONZALES

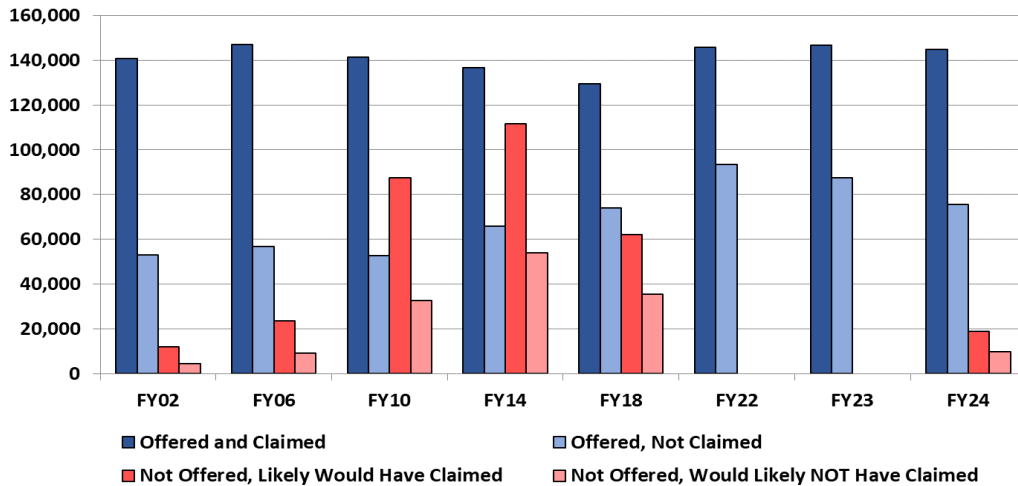
Working to Meet Demand and Improve MAP Purchasing Power

Demand for MAP

Good News: More low income students are attending college

Bad News: MAP funding is not meeting demand

Demand for MAP Exceeds Supply, Again



Note: ISAC calculates the number of students who would likely have accepted the award, had they been offered it, based on the previous year's data on awards offered and awards accepted (claimed) by college sector.

MAP Purchasing Power

Maximum MAP grant coverage of average tuition and mandatory fees:

- **57% coverage at a community college** (21 percentage points higher than FY19)
- **47% coverage at a public university** (16 points higher than in FY19)

Why is this important?

The MAP award size must be significant enough, usually in combination with other grants like Pell, to make it possible for a low income student to attend college.

The combination of MAP and Pell grants allows virtually every applicant at or below the median income in Illinois to attend community college tuition-free.

Demand for MAP has increased from FY24 to FY25, and we are expecting yet more demand in FY26. An additional \$10 million in funding, recommended by the Governor, will likely allow us to serve about 2,100 more students, but we will not likely be able to offer a grant to all students, and purchasing power will erode if tuition and fees grow faster than grant size.



"I would not have been able to graduate from college without the MAP grant. MAP allowed me to focus more on my studies without worrying about how I was going to be able to afford college. The MAP grant was so important to me that I've focused my career on working with counselors and other education professionals to help them help their students reach their postsecondary goals."

MANUEL TALAVERA

Where MAP recipients go to school

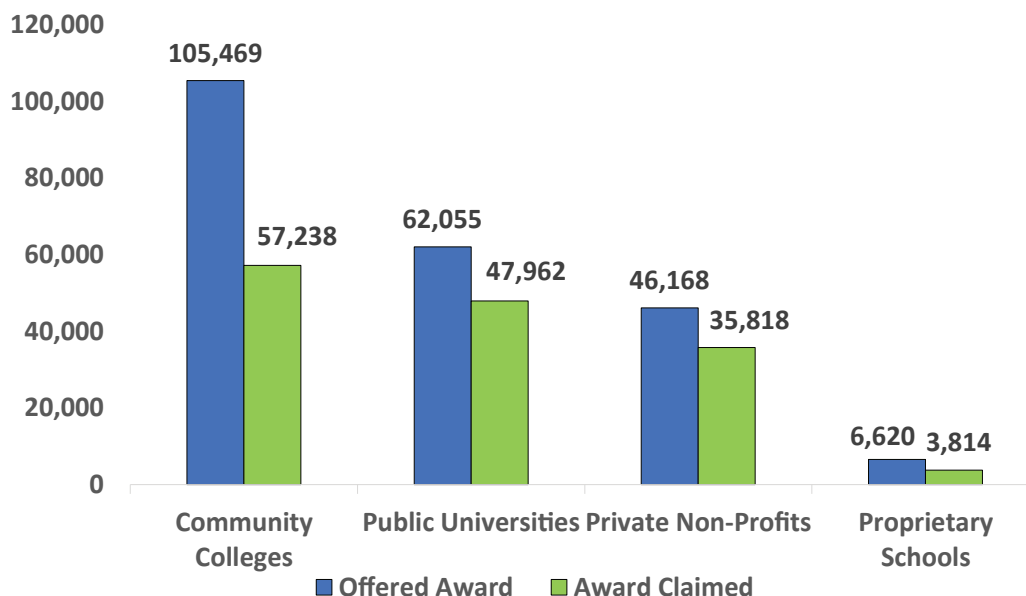
MAP recipients are enrolled in all sectors of higher education.

Did you Know?

A student's eligibility for MAP is determined using information provided on the Free Application for Federal Student Aid (FAFSA®) or the Alternative Application for Illinois Financial Aid.

In FY24, community college students were offered and accepted the most grants, but the percentage of students who accepted grants is much higher at public universities and private non-profit schools.

FY24 MAP Grants Offered and Accepted by Sector



FY24 MAP Grants, by Sector

	MAP Eligibles Offered Award	Sector % of Awards Offered	Accepted Award (Recipients)	% of Awards Accepted	Accepted Rate	Eligibility Amounts	Claims	% \$ Eligibility Claimed	Sector % of Total Claims	Avg MAP Eligibility	Avg MAP Claim
Community Colleges	105,469	48%	57,238	40%	54%	\$299,041,146	\$91,651,667	31%	13%	\$2,835	\$1,601
Public Universities	62,055	28%	47,962	33%	77%	\$503,641,888	\$326,762,235	65%	47%	\$8,116	\$6,813
Private Non-Profits	46,168	21%	35,818	25%	78%	\$385,616,740	\$253,186,057	66%	37%	\$8,352	\$7,069
Proprietary Schools	6,620	3%	3,814	3%	58%	\$54,833,005	\$19,070,508	35%	3%	\$8,283	\$5,000
Total	220,312	100%	144,832	100%	66%	\$1,243,132,779	\$690,670,467	56%	100%	\$5,643	\$4,769

Dollar amount of award is based on student's estimated financial need, hours enrolled, and cost of attendance at student's selected MAP-eligible school.